

Home

About

Vision



# WELCOME TO Purivon Nature Touch

Nourish with purivon





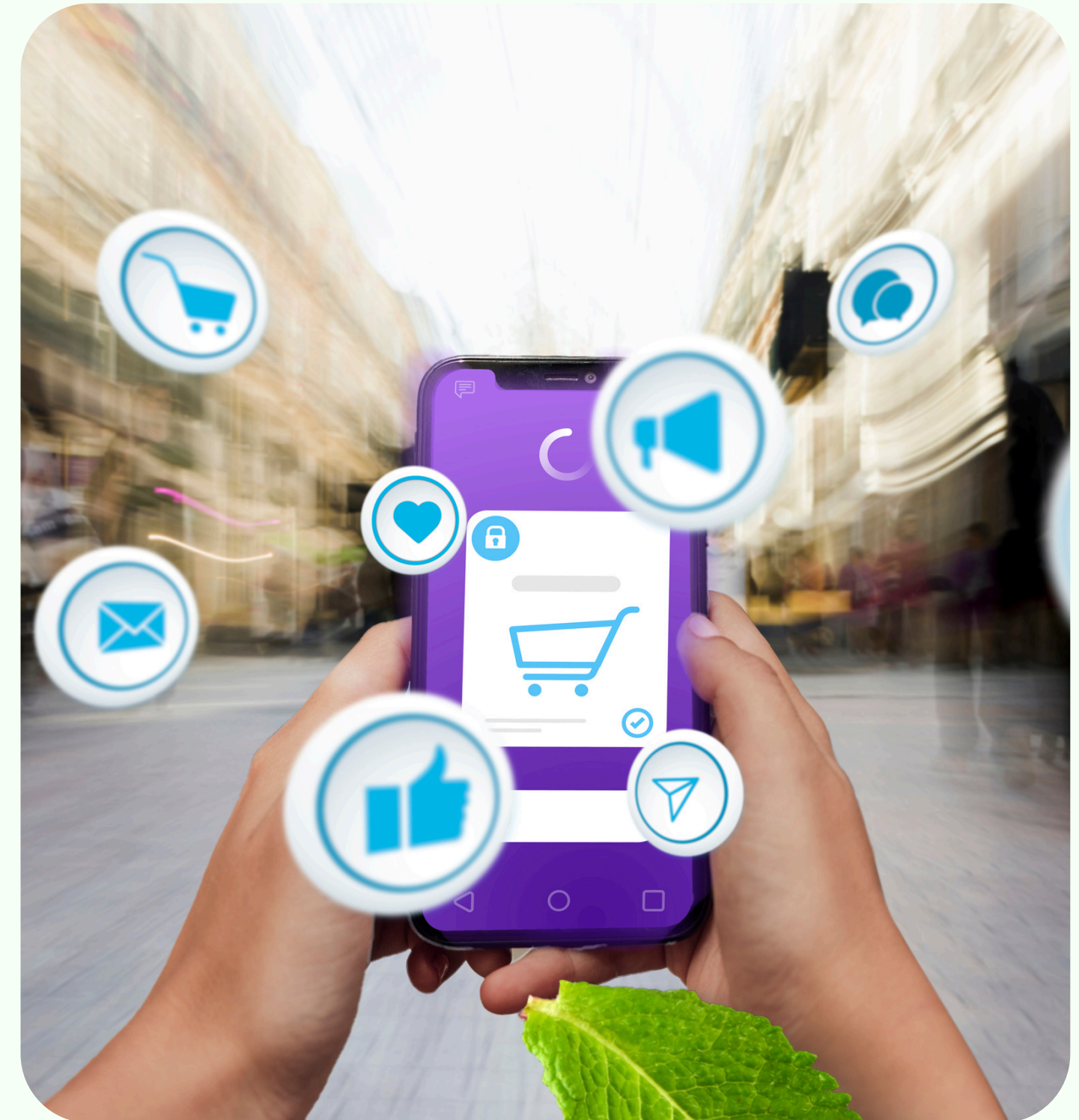


# ABOUT US

We are an innovative e-commerce and product-based network marketing company built on two pillars: quality products that enrich lives and a sustainable business model that empowers people to achieve financial independence.

By blending e-commerce with people-to-people connections, we offer customers trusted, affordable solutions while giving partners the opportunity to build rewarding careers.

More than just products, we deliver experiences, opportunities, and a culture of trust—where passion meets purpose and ambition turns into achievement.

[Home](#)[About Us](#)[Vision/ Mission](#)[Choose](#)



[Home](#)[About Us](#)[Vision/ Mission](#)[Choose](#)

## OUR VISION

To empower individuals worldwide by creating a trusted e-commerce platform that blends quality products with rewarding business opportunities, enabling financial freedom and holistic growth.

## OUR MISSION

Our mission is to deliver high-quality, innovative, and affordable products that enrich everyday life while building a transparent and sustainable network marketing ecosystem where people grow together. We strive to empower entrepreneurship by providing a platform where dedication and teamwork lead to success, and we remain committed to ethical business practices and long-term customer satisfaction.





# WHY CHOOSE US

- **Quality & Variety** – Wide range of trusted products that add real value to customers' lives.
- **Earning Opportunity** – A fair and rewarding business model designed to empower individuals.
- **Training & Support** – Guidance, mentorship, and tools for personal and professional growth.
- **Trust & Transparency** – Strong focus on ethics, customer satisfaction, and long-term relationships.
- **Community Growth** – We believe success is better when shared our network grows together.







[Vision/ Mission](#)

[Choose](#)

[Joining Pack](#)

**[Financial](#)**

# FINANCIAL REWARDS PLAN

HELPING YOU CREATE A SECURE  
FINANCIAL FUTURE



## AN OPPORTUNITY TO CREATE WEALTH IN BOOMING MARKET

We are delighted that you have chosen Purivon as your partner as you look to secure your personal financial future.

Our aim is to provide you with products that you will be proud to represent and share with others—products that are at the cutting edge of technology and are perfectly positioned in the booming molecule marketplace.

As you begin to understand how incredibly powerful and in demand the purivon products really are, the more you will want to recommend them to others. Sharing these innovative products is the key to your success.

Your income will be directly related to your efforts in sharing the products, the opportunity, and building a sales organization.

You can participate in the Purivon Financial Rewards Plan at whichever level you wish. You decide whether you want to create a part-time income through retail sales or build a full-time business







## EIGHT WAYS TO EARN INCOME WITH PURIVON POWERFULL FINANCIAL REWARD PLAN



# 1. RETAIL PROFIT

At any level in Purivon, Distributors are able to purchase products at the wholesale price for personal use. As a Distributor, you are also able to resell Purivon products and earn a retail profit. You can earn between **10 % to 30 %** retail profit on each sale.

**Example:** You pay 840/- for a product and sell it at the suggested retail of 1199/- you earn a 359.00 retail profit!







## 2. NEW CUSTOMER ACQUISITION BONUS

As you personally enroll new Customers into your team, you can earn lucrative Customer Acquisition Bonuses (CAB). These bonuses are paid on the purchase of one of the optional Purivon product packages as follows:





# JOINING PACK & NEW FIRST ORDER BONUS & CAPPING

PACK NAME	CV	FOB %	WEEKLY CAPPING
Basic	25 CV	7%	₹50,000/-
Basic Plus	50 CV	8%	₹2,00,000/-
Basic Advanced	100 CV	10%	₹5,00,000/-
Super Basic	300 CV	10%	₹10,00,000/-
Jumbo	500 CV	10%	₹15,00,000/-
Super Jumbo	1000 CV	10%	₹25,00,000/-







## 3. TEAM COMMISSION

You can earn powerful Team Commissions as you start to build your Purivon sales teams. These commissions are designed to reward you for helping and supporting those who join your team. the more you help them succeed, the more you can earn from Team Commissions.

**In order to qualify for this powerful income stream, you need to enroll two distributors who each accumulate 50 cv both side within one month. Place one of these distributors on your left team and one on your right team. This will activate your position so that you may now earn Team Commissions.**

As Purivon products and product packages are ordered or sold by those in your team, volume is created in each of your teams. When **50 Commissionable Volume (CV)** points has been accumulated in one team (it doesn't matter which one) and **50 CV** points in the other, you will earn a Team Commission of **500/- cycle**





# TEAM COMMISSION

Left & Right

50 CV

50 CV

1 Cycle = ₹500/-

- 
- **1:1 Pair Matching**
  - **Carry Forward**
  - **25 LAC Weekly CAP**





# EARN UP TO TEAM COMMISSIONS

per week

**2500000/-**







## 4. AUTO-SHIP BONUS

An autoship bonus of **5% on commissionable value (CV)** is a commission offered by a Purivon such as the autoship programs seen in the compensation plans of Purivon distributors for a customer's or distributor's ongoing product purchases. This bonus serves to incentivize consistent purchases and is a common feature in Purivon compensation plans, which vary widely but often include elements like autoship programs and tiered bonuses for recruiting and sales volume, according to **Purivon FINANCIAL REWARDS PLAN**







# 5. GENERATION MATCHING BONUS



You can earn Generation Matching Bonuses on the Team Commissions earned by your personally enrolled team. You can earn this bonus on up to four levels of your team in each line of sponsorship. Every person you personally enroll creates a new line of sponsorship

CYCLES COMPLETED	QUALIFIED LEVEL	SLAB
5 Cycles	Open Level 1	10%
10 Cycles	Open Level 2	15%
20 Cycles	Open Level 3	20%
40 Cycles	Open Level 4	25%





## 6. CAR BONUS



Purivon provides a generous car bonus to Platinum executive and above. The C.B allocates **5%** of company's monthly total CV and is computed by a point a point sharing system based on the Car bonus point earned by the qualifiers . C.B value per point will vary each business month and is computed monthly as per the formula shown below:

**5% of total company's monthly CV**

**Total Car bonus point collected**

**= Car bonus value**

- **150000rs** business month is the maximum you can earn in CB
- once you have qualified for the car bonus, you can enjoy car bonus continuously till the time you have qualified as a silver executive







# 7. HOUSE BONUS



Purivon provides a generous car bonus to Opel executive and above. The H.B allocates **5%** of company's monthly total CV and is computed by a point a point sharing system based on the Car bonus point earned by the qualifiers . H.B value per point will vary each business month and is computed monthly as per the formula shown below:

**5% of total company's monthly CV**

**Total Car bonus point collected**

**= House bonus value**

- **200000rs** business month is the maximum you can earn in HB
- once you have qualified for the car bonus, you can enjoy car bonus continuously till the time you have qualified as a silver executive







## 8. RANK ADVANCEMENT BONUS & TRIPS

(NO TIME LIMIT BONUS)



- Product Buy → Associate
- Complete Joining Pack → Distributor
- Complete A & B Team → Executive





[Car Bonus](#)

[House Bonus](#)

[Trips](#)

**[Ranks](#)**



# RANKS





## NO TIME LIMIT BONUS

RANK	LEVEL OPEN	CYCLE	RANK BONUS & TRIPS
Jade Executive	L1	5 Cycle	1000/-
Silver Executive	L2	10 Cycle	2500/-
Gold Executive	L3	20 Cycle	5000/-
Pearl Executive	L4	40 Cycle	10000/-
Platinum Executive		80 Cycle	15000/- + Local Trip + Car Bonus 5% of C.T.O
Sapphire Executive		150 Cycle	40000/- + Bangkok Trip
Opal Executive		300 Cycle	80000/- + Bali Trip + House Bonus 5% of C.T.O
Ruby Executive		600 Cycle	150000/- + Malaysia Trip
Emerald Executive		1000 Cycle	2.5 LAC + Dubai
Diamond Executive		3 Emerald (2+1)	7.5 LAC + Mauritius Couple Trip
Double Diamond Executive		2 Diamond (1+1)	10 LAC + Australia Couple Trip
Triple Diamond Executive		3 Diamond (2+1)	20 LAC + Capetown Couple Trip





## NO TIME LIMIT BONUS

RANK	LEVEL OPEN	CYCLE	REWARD / TRIP / BONUS
Blue Diamond Executive		6 Diamond (5+1)	35 LAC + Moscow Couple Trip
Double Blue Diamond		12 Diamond (10+2)	60 LAC + London Couple Trip
Triple Blue Diamond		3 Double Blue Diamond (2+1)	90 LAC + Spain Couple Trip
White Diamond		6 Double Blue (5+1)	1 CR + Italy Couple Trip
Double White Diamond		12 Double Blue Diamond (10+2)	6 CR + U.S.A Couple Trip
Triple White Diamond		3 Triple Blue Diamond (2+1)	9 CR + France Couple + 2 kids Trip
Black Diamond		6 Triple Blue Diamond (5+1)	18 CR + Germany Couple + 2 kids Trip
Double Black Diamond		12 Triple Blue Diamond (10+2)	30 CR + Netherlands Couple + 2 kids Trip
Triple Black Diamond		3 White Diamond (2+1)	45 CR + Canada Couple + 2 kids Trip
Crown Diamond		6 White Diamond (5+1)	60 CR + Argentina Couple + 2 kids Trip
Double Crown Diamond		12 White Diamond (10+2)	75 CR + Japan Couple + 2 kids Trip
Triple Crown Diamond		3 Double White Diamond (2+1)	90 CR + Switzerland Couple + 2 kids Trip
Crown Ambassador		6 Double White Diamond (5+1)	100 CR + Scotland Couple + 2 kids Trip







# SILVER EXECUTIVE

- You must be a Qualified **10 cycle** with 4 personally enrolled Executives who have each generated 50CV in any month. Earn **500/-Team Commissions**.
- Earn two level of Leadership Matching Bonuses and **2500/-rank bonus**



# GOLD EXECUTIVE

- You must be a Qualified **20 cycle** with 8 personally enrolled Executives who have each generated 50CV in any month. Earn **500/-** Team Commissions.
- Earn one Three of Leadership Matching Bonuses and **5000/-** rank bonus







Bonus

Silver

Gold

**Pearl**

# PEARL EXECUTIVE

- You must be a Qualified **40 cycle** with 12 personally enrolled Executives who have each generated 50CV in any month. Earn **500/-** Team Commissions.
- Earn four level of Leadership Matching Bonuses and **10000/-** rank bonus







Silver

Gold

Pearl

**Platinum**

# PLATINUM EXECUTIVE

- You must be a Qualified Platinum executive and have earned 80 Team Commissions in the preceding any month. Earn **500/ Team Commissions**.
- Earn of **15000/- rank bonus** and local trip and started Car bonus 5% of C.T.O







# SAPPHIRE EXECUTIVE

- You must be a Qualified sapphire executive and have earned 150 Team Commissions in the preceding any month. Earn **500/-** Team Commissions.
- Earn of **40000/-** rank bonus and Bangkok trip





# OPEL EXECUTIVE

- You must be a Qualified opel executive and have earned 300Team Commissions in the preceding any month. Earn **500/-** Team Commissions.
- Earn of **80000/-** rank bonus and Bali trip and started House bonus 5% of C.T.O





**150000/-**



## RUBY EXECUTIVE

- You must be a Qualified Ruby executive and have earned 600 Team Commissions in the preceding any month. Earn **500/-** Team Commissions.
- Earn of **150000/-** rank bonus and Malaysia trip







Sapphire

Opal

Ruby

**Emerald**

# EMERALD EXECUTIVE

- You must be a Qualified emerald executive and have earned 1000 Team Commissions in the preceding any month. Earn **500/-** Team Commissions.
- Earn of **250000/-** rank bonus and Dubai trip







# DIAMOND EXECUTIVE

- You must be a Qualified Emerald Director with at least Three different emerald Directors legs (1 power leg with own sponsoring team) and have earned 500/- Team Commissions in the preceding any month. Attend our annual Diamond Lifestyle programs.
- Earn of **7.5 lac** rank bonus and Mauritius couple trip







Ruby

Emerald

Diamond

**Double**

# DOUBLE DIAMOND EXECUTIVE

- You must be a Qualified double diamond executive Director with at least two different Diamond Directors legs (1 power leg with own sponsoring team) and have earned 500/- Team Commissions in the preceding any month. Attend our annual Diamond Lifestyle programs.
- Earn of **10lac** rank bonus and Australia couple trip







# TRIPLE DIAMOND EXECUTIVE

- You must be a Qualified Triple Diamond Director with at least Three different Three Diamond Directors legs( I power leg with own sponsoring team)and have earned 500/- Team Commissions in the preceding any month. Attend our annual Diamond Lifestyle programs.
- Earn of **20 lac** rank bonus and Cape town couple trip







Diamond

Double

Triple

**Blue**

# BLUE DIAMOND EXECUTIVE

- You must be a Qualified Blue Diamond Director with at least six different Diamonds Directors legs (1 power leg with own sponsoring team) and have earned 500/- Team Commissions in the preceding any month. Attend our annual Diamond Lifestyle programs.
- Earn of **35 lac** rank bonus and Masco couple trip







# DOUBLE BLUE DIAMOND EXECUTIVE

- You must be a Qualified Blue Diamond Director with at least Twelve different Diamonds Directors legs( 2 power leg with own sponsoring team)and have earned 500/- Team Commissions in the preceding any month. Attend our annual Diamond Lifestyle programs.
- Earn of **60 lac** rank bonus and London couple trip







Triple

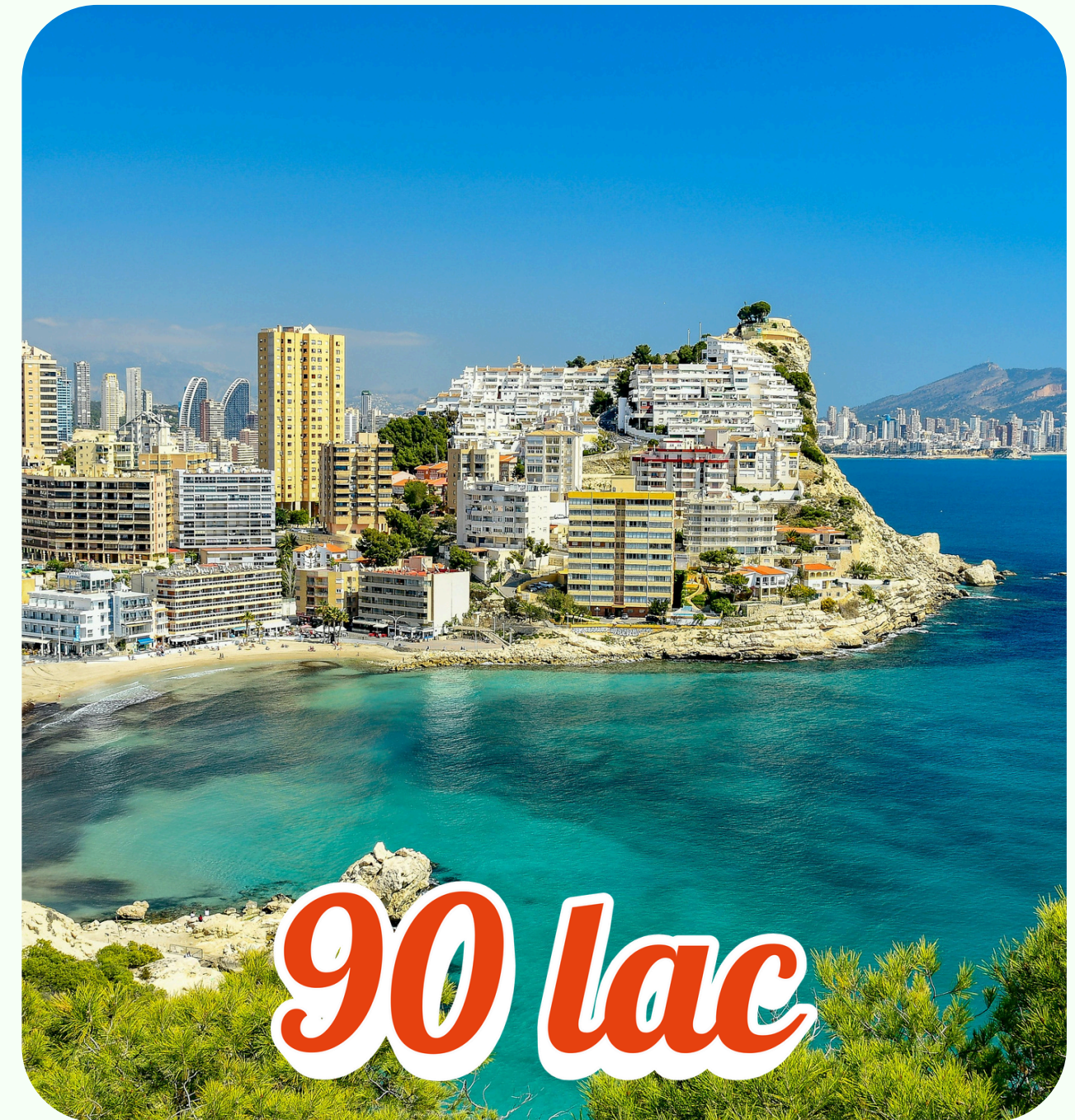
Blue

Double

**Triple Blue**

# TRIPLE BLUE DIAMOND EXECUTIVE

- You must be a Qualified Triple Blue Diamond Director with at least 3 double Blue Diamond different Diamonds Directors legs (1 power leg with own sponsoring team) and have earned 500/- Team Commissions in the preceding any month. Attend our annual Diamond Lifestyle programs.
- Earn of **90 lac** rank bonus and Spain couple trip







# WHITE DIAMOND EXECUTIVE

- You must be a Qualified White Diamond Director with at least 6 double Blue Diamond different Diamonds Directors legs (1 power leg with own sponsoring team) and have earned 500/- Team Commissions in the preceding any month. Attend our annual Diamond Lifestyle programs.
- Earn of **1.5cr** rank bonus and Italy couple trip



**1.5cr**





Double

Triple

White

Double

# DOUBLE WHITE DIAMOND EXECUTIVE

- You must be a Qualified Double White Diamond Director with at least 12 double Blue Diamond different Diamonds Directors legs (2 power leg with own sponsoring team) and have earned 500/- Team Commissions in the preceding any month. Attend our annual Diamond Lifestyle programs.
- Earn of **6cr** rank bonus and USA couple trip







# TRIPLE WHITE DIAMOND EXECUTIVE

- You must be a Qualified Triple White Diamond Director with at least 3 Triple Blue Diamond different Diamonds Directors legs (1 power leg with own sponsoring team) and have earned 500/- Team Commissions in the preceding any month. Attend our annual Diamond Lifestyle programs.
- Earn of **9cr** rank bonus and France couple + 2 kids trip







White

Double

Triple

**Black**

# BLACK DIAMOND EXECUTIVE

- You must be a Qualified Black Diamond Director with at least 6 Triple Blue Diamond different Diamonds Directors legs (1 power leg with own sponsoring team) and have earned 500/- Team Commissions in the preceding any month. Attend our annual Diamond Lifestyle program .
- Earn of **18cr** rank bonus and Germany couple + 2 kids trip







# DOUBLE BLACK DIAMOND EXECUTIVE

- You must be a Qualified Double Black Diamond Director with at least 12 Triple Blue Diamond different Diamonds Directors legs ( 2 power leg with own sponsoring team) and have earned 500/- Team Commissions in the preceding any month. Attend our annual Diamond Lifestyle programs.
- Earn of **30cr** rank bonus and Netherlands couple + 2 kids trip



Double

Triple

Black

Double







Triple

Black

Double

**Triple**

# TRIPLE BLACK DIAMOND EXECUTIVE

- You must be a Qualified Triple Black Diamond Director with at least 3 White Diamond different Diamonds Directors legs (1 power leg with own sponsoring team) and have earned 500/- Team Commissions in the preceding any month. Attend our annual Diamond Lifestyle programs.
- Earn of **45cr** rank bonus and Canada couple + 2 kids trip





# CROWN DIAMOND EXECUTIVE

- You must be a Qualified Triple Black Diamond Director with at least 6 White Diamond different Diamonds Directors legs (1 power leg with own sponsoring team) and have earned 500/- Team Commissions in the preceding any month. Attend our annual Diamond Lifestyle programs .
- Earn of **60cr** rank bonus and Argentina couple + 2 kids trip





# DOUBLE CROWN DIAMOND EXECUTIVE

- You must be a Qualified Double Crown Diamond Director with at least 12 White Diamond different Diamonds Directors leg (2 power leg with own sponsoring team) and have earned 500/- Team Commissions in the preceding any month. Attend our annual Diamond Lifestyle programs.
- Earn of **75cr** rank bonus and Japan couple + 2 kids trip





# TRIPLE CROWN DIAMOND EXECUTIVE

- You must be a Qualified Triple CROWN Diamond Director with at least 3 DOUBLE White Diamond different Diamonds Directors legs (1 power leg with own sponsoring team) and have earned 500/- Team Commissions in the preceding any month. Attend our annual Diamond Lifestyle programs.
- Earn of **90cr** rank bonus and Switzerland couple + 2 kids trip







Crown

Double

Triple

**Crown**

# CROWN AMBASSADOR EXECUTIVE

- You must be a Qualified **CROWN** Ambassador Director with at least 6 **DOUBLE** White Diamond different Diamonds Directors legs ( 1 power leg with own sponsoring team) and have earned 500/- Team Commissions in the preceding any month. Attend our annual Diamond Lifestyle programs.
- Earn of **100cr** rank bonus and Scotland couple + 2 kids trip





[Double](#)

[Triple](#)

[Crown](#)

[Glossary](#)



# GLOSSARY OF TERMS





# ACTIVE :

During Platinum and above Being Active means you must generate 10 CV points during your Autoship month. You must be Active to earn Team Commissions and Matching Bonuses. If you do not remain Active, any accumulated points will be reset to zero when commissions are calculated. You can become Active again after inactivity by obtaining 10 CV points within the Autoship month. Points that have been lost cannot be restored.





# COMMISSIONABLE VOLUME (CV):

In order to ensure our products are competitively priced, each Purivon product is assigned a points value (CV); the Financial Rewards Plan is based on the accumulation of these points. CV starts to accumulate at the time you enroll and earn 25 CV from personal purchases or Customer purchases made through your replicated website. CV continues to accumulate so long as you remain Qualified.







# GROUP VOLUME (GV):

Group Volume is the volume that is generated through your organization, including volume generated from PGV and your upline (spillover)







## **PERSONAL GROUP VOLUME (PGV):**

Personal Group Volume is the volume that is generated throughout your organization, excluding volume created by your upline.

## **PERSONAL VOLUME (PCV):**

Personal Group Volume is the volume that is generated throughout your organization, excluding volume created by your upline.





## TEAM COMMISSION :

A Team Commission is created when you accumulate 50 CV in one of your teams and 50 CV in the other. This creates a Team Commission of 500/-. It does not matter which team accumulates what volume so long as a total of 100 CV is generated with at least 50 CV from one team and 50 CV from the other team.

## UPLINE :

Includes the Member who originally enrolled you and everyone sponsored before you within the line of sponsorship







## LINE OF SPONSORSHIP :

A line of sponsorship is created when you enroll a new Distributor in your team. The line of sponsorship grows as the Distributor you have enrolled enrolls other Distributors and those Distributors enroll others. This process continues through unlimited levels in your team. Every new Distributor enrolled creates a new line of sponsorship and there is no limit to how many lines of sponsorship you can create. The Leadership Matching Bonus is earned through all lines of sponsorship and can be earned on up to seven levels of your sales organization.





# AUTOSHIP MONTH :

The Autoship Month is the period of time during which you are responsible for meeting your CV requirements and maintaining your rank qualifications. The period begins on the day of the month that you purchased your sign-up package from the Company and ends on midnight EST the day prior of the following month.





Line

Autoship

Thank



# Thank You

For Your Attention

